



## Harbor Bridge Project

Lynn Allison, Public Information Coordinator

361-446-9542

[lallison@harborbridgeproject.com](mailto:allison@harborbridgeproject.com)

### TRAFFIC ADVISORY

For Immediate Release

February 18, 2022

**The Harbor Bridge Project announces the opening of a new direct connector ramp to affect traffic heading southbound on IH 37 to southbound SH 286 (Crosstown Expressway).**

**A one-night full southbound IH 37 closure at the SH 286 Interchange is necessary to open the new ramp.**

*New permanent connector ramp opening to be in effect February 25, 2022*

---

**CORPUS CHRISTI** – Beginning Friday, February 25, the newly constructed direct connector ramp from southbound IH 37 to southbound SH 286 will be open to motorists. As a result, commuters traveling in this direction will no longer exit to the left onto the temporary exit ramp to access SH 286. The new connector ramp represents completed roadwork associated with the Harbor Bridge Project.

On Thursday, February 24, from 9 pm until 6 am, Friday, February 25, all southbound IH 37 mainlanes at the SH 286 Interchange will be closed while crews prepare to switch traffic onto the new ramp. Motorists heading southbound on IH 37 towards southbound SH 286, northbound US 181 and to the Bayfront and Uptown areas will be detoured as follows: Take the Port Avenue exit, turn left on Leopard Street, turn right on Culberson Street to merge onto southbound SH 286 to continue south, or follow the detour signs to exit Tarlton Street and make a U-turn to continue northbound on SH 286 to the US 181 and Staples Street exit. Please refer to the attached detour map.

Signage and message boards will be in place to assist motorists with navigating the new connector ramp and temporary detour.

**Motorists are urged to be aware of the new ramp, follow all traffic control devices, and to slow down in all work zones. All work is weather permitting.**

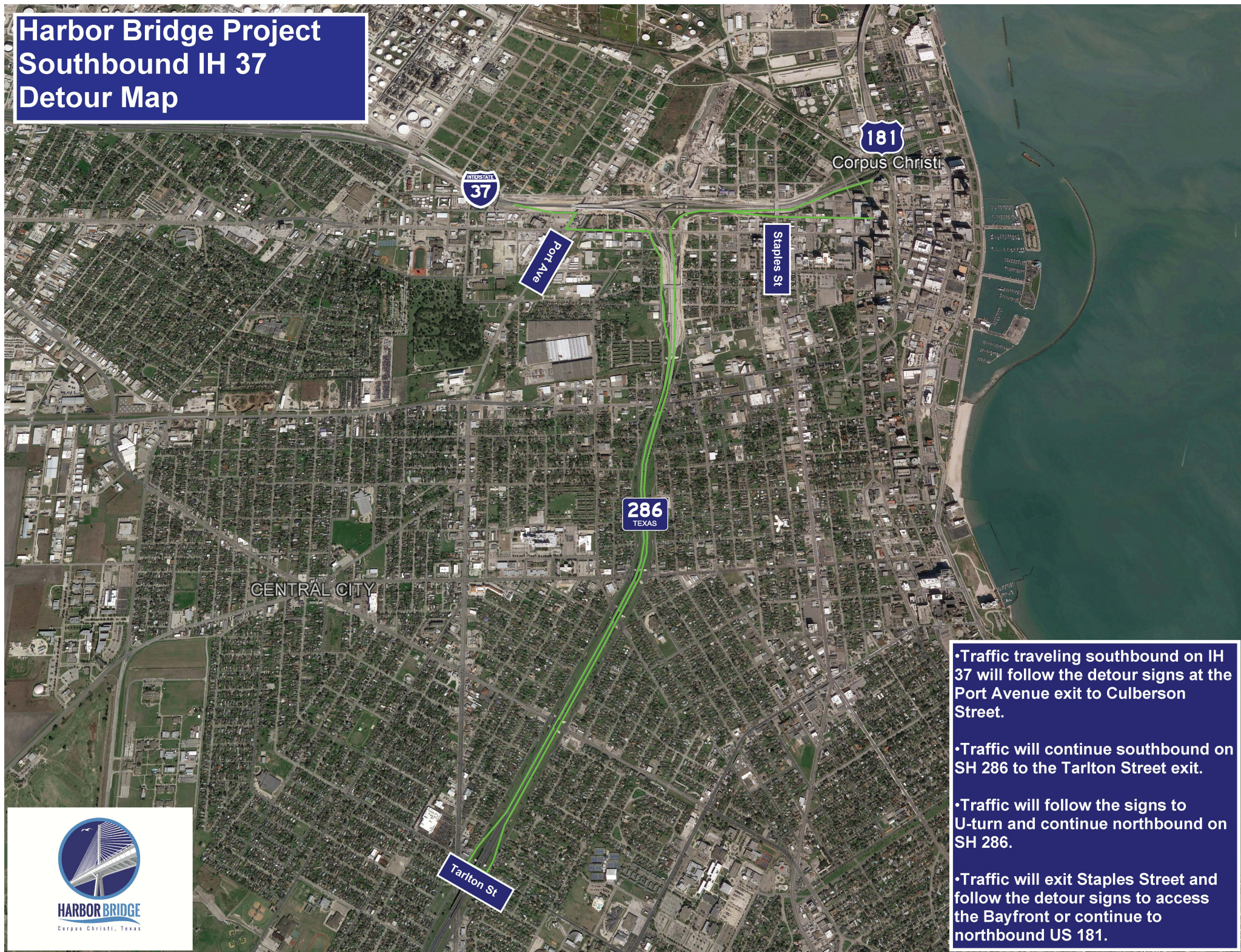
For information about all current and upcoming lane closures related to the Harbor Bridge Project, visit: [www.harborbridgeproject.com](http://www.harborbridgeproject.com).

---

---



# Harbor Bridge Project Southbound IH 37 Detour Map



- Traffic traveling southbound on IH 37 will follow the detour signs at the Port Avenue exit to Culberson Street.

- Traffic will continue southbound on SH 286 to the Tarlton Street exit.

- Traffic will follow the signs to U-turn and continue northbound on SH 286.

- Traffic will exit Staples Street and follow the detour signs to access the Bayfront or continue to northbound US 181.

