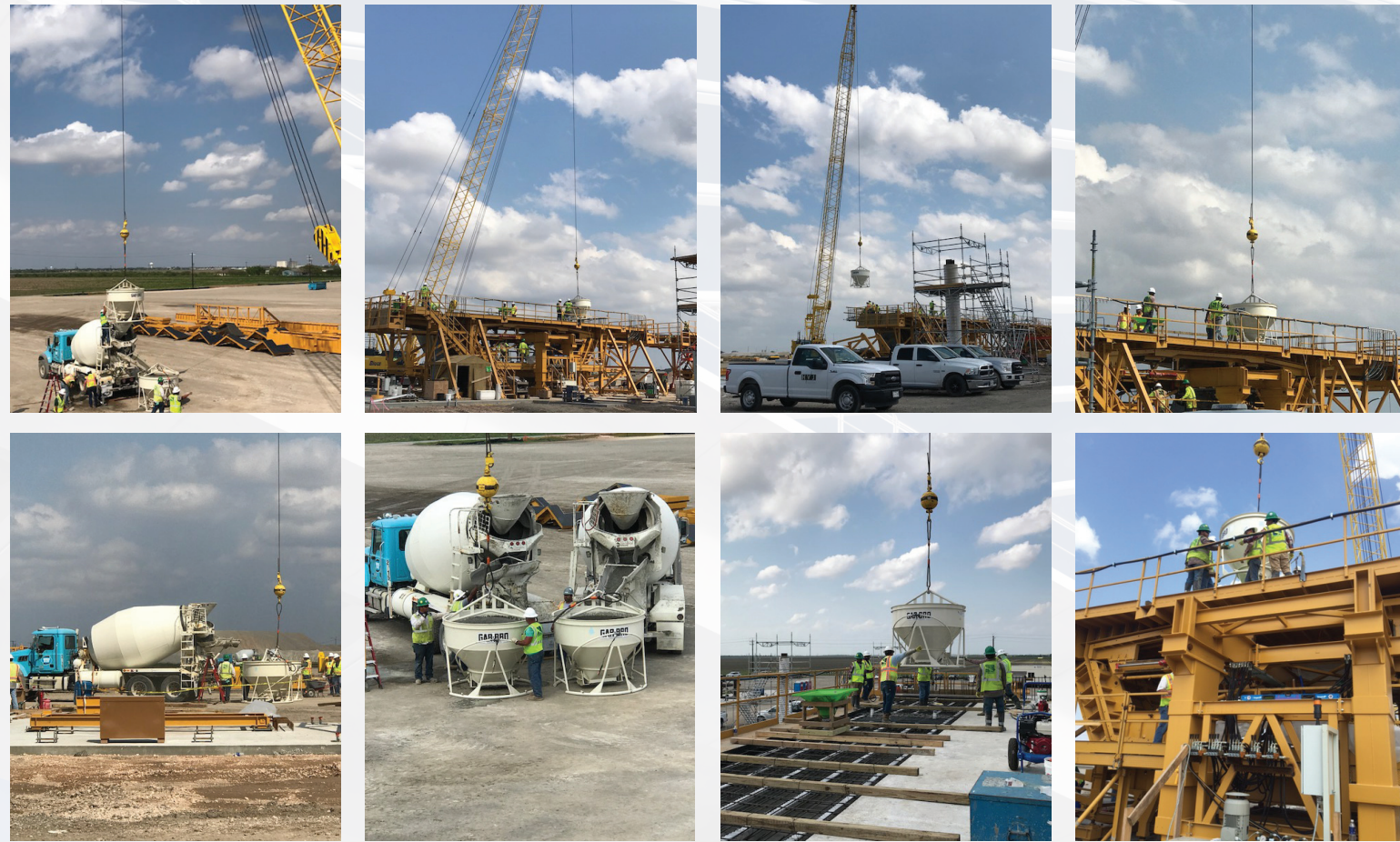


Pre Cast Facts



- Each segment weighs approximately 100 tons.
- Each segment is comprised of approximately 50 cubic yards of concrete.
- There are approximately 2,600 segments on the job.
- The approach segments are 10'-1" tall.
- The main span segments are 14' tall.
- The southbound roadway deck is 58' wide.
- The northbound roadway deck and shared-use path is 69' wide.

PROJECT FACT SHEET



HARBOR BRIDGE
Corpus Christi, Texas


HarborBridgeProject.com
1-877-227-4144
Lynn Allison | LAllison@HarborBridgeProject.com
Julee Lugo | JLugo@HarborBridgeProject.com

① HarborBridgeProject
② @HarborBridgePrj
③ publicinformation@harborbridgeproject.com

Flatiron/Dragados, LLC
2506 N. Port Ave.
361-288-2900




Seaside Statistics – Ever wondered?




The main span length of the new Harbor Bridge will be 1661 ft, and the main tower height will reach 538 ft.

Sitting 205 ft above the water, this bridge will include a dynamic LED lighting feature, which will provide opportunities for custom displays on nights, holidays, and special events.



The Belvedere will feature tremendous views of the beautiful bay, Port of Corpus Christi, the USS Lexington, the Texas State Aquarium, The Art Museum of South Texas, and the American Bank Center.

For those looking to enjoy the bridge on non-motorized vehicles, the project will highlight an easily-accessible, shared-use bicycle/pedestrian path. The trek will include a total climb of 200 ft and 2.4 miles in one direction, for a roundtrip total of 4.8 miles.




Harbor Bridge's support cables are ideally placed down the center of the project, allowing for unobstructed views of the Bay.

Due to the corrosion resistant construction, this new bridge is designed to last 170 years—which is approximately 100 years longer than most traditional bridges stateside.



The base of each bridge tower is roughly the size of two basketball courts.



The length of the bridge's main span is equivalent to the length of 5-½ football fields.

Once complete, the Harbor Bridge will not only be the tallest structure in South Texas, but also the longest cable stay bridge in the United States.

