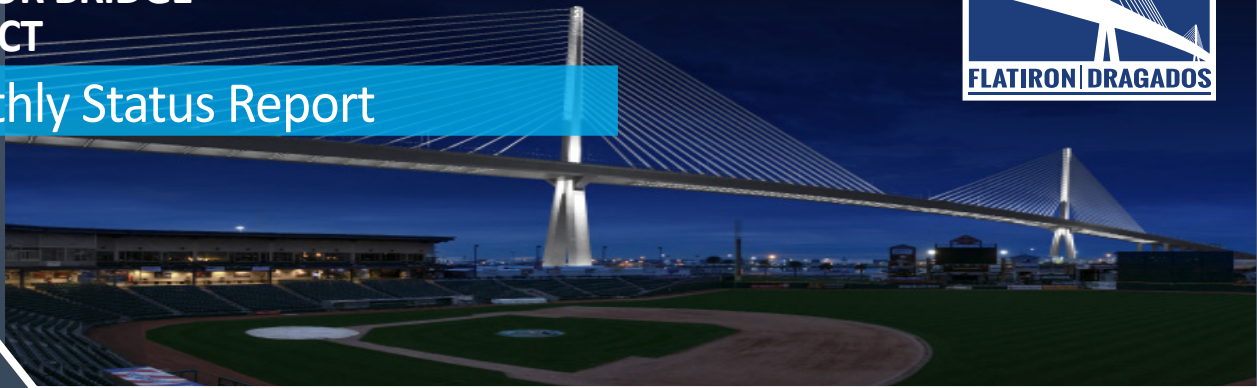


US 181 HARBOR BRIDGE PROJECT

Monthly Status Report



Toll Free: 1.877.227.4144 • Public Information: publicinformation@harborbridgeproject.com

May 2023

HARBOR BRIDGE PROJECT (HBP) APPROACH BRIDGE SUPERSTRUCTURE MILESTONE:

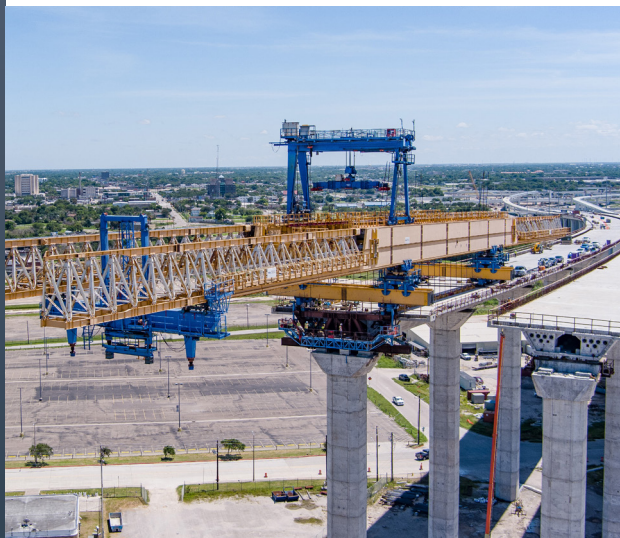
Last month the HBP Launching Gantry Crane (LGC) superstructure crew achieved a significant project milestone by placing the last of 44 LGC erected spans on the South Approach. The monster overhead crane placed 78 spans, including 34 on the North Approach. The horizontal gantry has been the workhorse for the project, erecting nearly 1,400 segments using both span-by-span and modified cantilever segmental construction methods equating to 2.7 miles of bridge length and 800,000 square feet of the bridge deck. The precast segmental approach construction was complemented with highly complex gantry kinematics, including multiple side shifts with variable box-girder segment cross-sections. Precast Yard operations in Robstown cast the LGC-erected segments using approximately 31,612 cubic yards of specialized 170-year lifespan concrete mix and 9,932,809 pounds of rebar.

Forward steady progress never faltered despite the technical challenges of unique side shifts, expansions, cantilever erections, and merging ramps into mainline spans. The team's maintenance plan included a stockpile of critical spare parts, facilitating operations with minimal mechanical downtime. Additional HBP LGC achievements include setting a record for the longest span built utilizing a span-by-span method at 207 feet and possibly the heaviest at almost 1,800 tons. At times the mega-machine stretched to 500 feet and was launched at elevations ranging from 50 to 180 feet.

Currently, the LGC is secured at Span 8S – NB awaiting complete deconstruction plans and disassembly to begin later this summer. Our reliable three million-ton horizon changer will ultimately depart for the next job just as she arrived - in 40 to 50 shipping containers.

ROADWORKS MILESTONE:

Another recent milestone includes the opening of Lake Street to motorists and pedestrians. The new route provides improved connectivity around the Northside Neighborhoods. It features sidewalks on both sides of the arch bridge over the Salt Flat Channel where walkers and bicyclists in the area can enjoy watching birds catch their dinner.



CONNECT WITH US